



SHREWSBURY INTERNATIONAL SCHOOL

BANGKOK

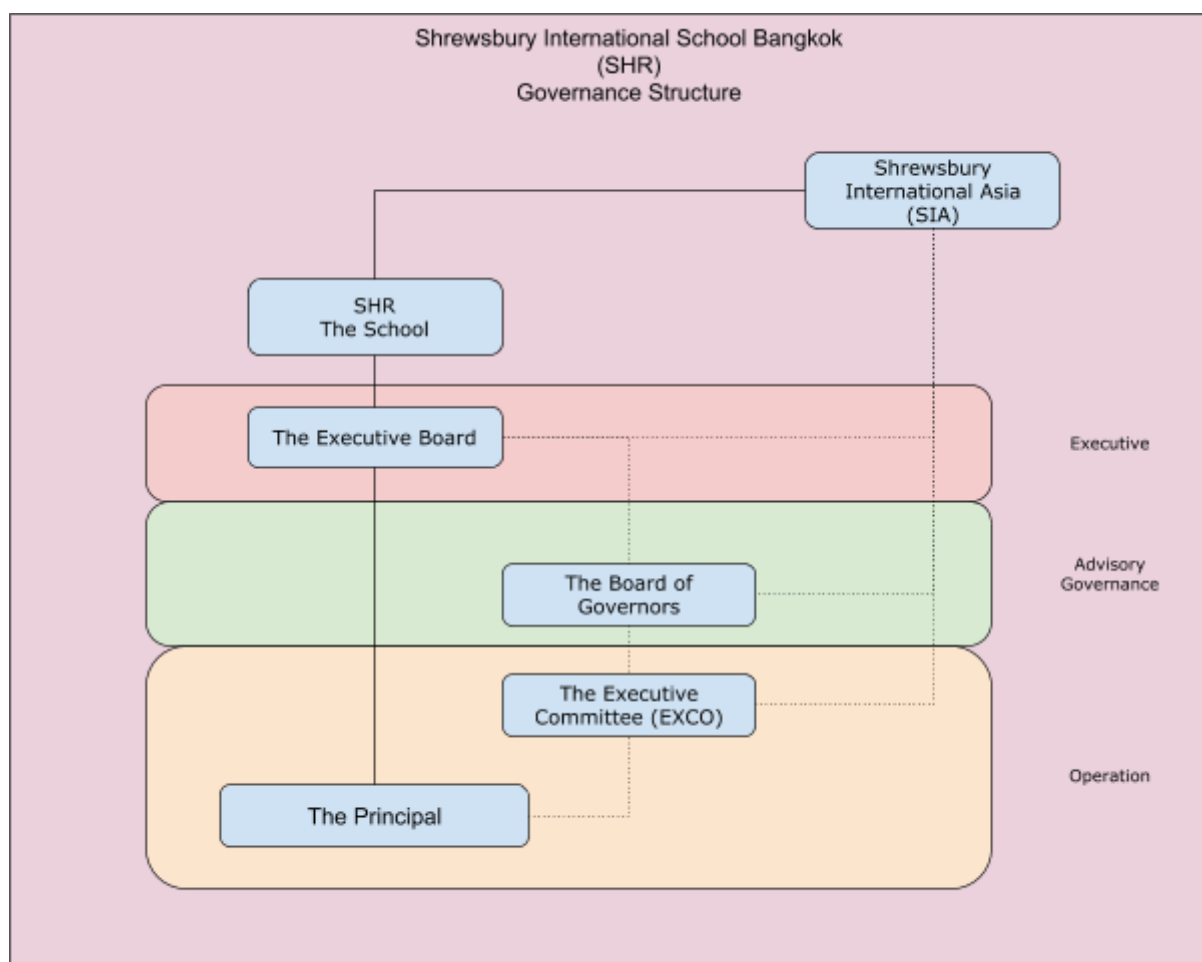
Policy Title:	Governance Structure
Policy Section:	Section C – Governance, Leadership and Ownership
Policy Number:	B7
Approval:	SMT
Review:	Board of Governors
Publish to:	Policy Compendium Website Parent Portal Staff Handbook

1. Introduction

Shrewsbury International School Bangkok Riverside (hereafter SHR) is a school independently licensed under The Private School Act BE 2550 (2007) as amended by the Private School Act (No 2) BE 2554 (2011). It has independent Framework, Services and Licence Agreements with Shrewsbury School UK. Its governance structure is designed to ensure that there is clear distance between the governance of the school and its management and operation as well as ensuring that the institutional advice, knowledge and experience is readily and regularly available to The Principal.

As part of the Shrewsbury International Group of Schools, Shrewsbury International Asia was established in 2018 as a company to support the setup and operation of the schools in Asia bearing the Shrewsbury Name. Shrewsbury International Asia has an agreement with Shrewsbury School UK which allows it to use the Name and Arms of Shrewsbury.

2. Governance Structure



2.1. Shrewsbury International Asia

Shrewsbury International Asia is a company established in 2018 to support the establishment and operation of all schools in Asia bearing the Shrewsbury name including SHR. SIA's Chief Executive Officer is a former Principal of SHR (12 years) and its CFO is a former Director of Business Services at SHR (10 years). It provides a range of advisory services to SHR including but not limited to:

- 2.1.1. Policy Advice;
- 2.1.2. Principals' Training;
- 2.1.3. Performance Management;
- 2.2.1. Operational Assistance;
- 2.2.2. Financial Advice.

Its CEO and CFO attend Board of Governors Meetings ex-officio (meeting termly) and are members of the The Executive Committee EXCO (meeting monthly).

2.2. The Executive Board

The Executive Board (not to be confused with The Executive Committee or EXCO) is the ultimate decision-making body of The School as constituted in accordance with The Private School Act and The School Charter. It meets termly after the Board of Governors Meetings and comprises The School Proprietor and family members. It operates to a set of Rules approved in November 2017 and published separately in SHR's Policy Compendium.

2.3. The Board of Governors

The Board of Governors is an advisory body meeting termly and providing advice to The Executive Board, The Executive Committee and The School Principal on The Framework of Governance. It operates to a set of Rules established in 2003 and revised in 2017. The Board of Governors is independently chaired and has local and international members some of whom have areas of specialist interest - such as Health and Safety, Child Protection & Safeguarding - on which they provide advice. Shrewsbury School UK provides two members of the Board of Governors as ratified in the Framework, Services and Licence Agreements with Shrewsbury School Enterprises and Shrewsbury School UK.

2.4. The Executive Committee (EXCO)

EXCO is a body with delegated powers to ensure excellent working and operational relations between The Principal (and The Senior Management Team) and The Executive Board. It meets monthly to support The Principal in respect of:

- 2.4.1. Finance including budgeting;
- 2.4.2. Collection of Fees;
- 2.4.3. Enrollment and Admissions;
- 2.4.4. Health and Safety;
- 2.4.5. Child Protection & Safeguarding
- 2.4.6. Staffing and Headcount;
- 2.4.7. and other matters

It ensures that The Principal is able to make decisions quickly and effectively to support the safe and agile operation of The School in the context of an international construct with The Executive Board and The Board of Governors meeting only termly.